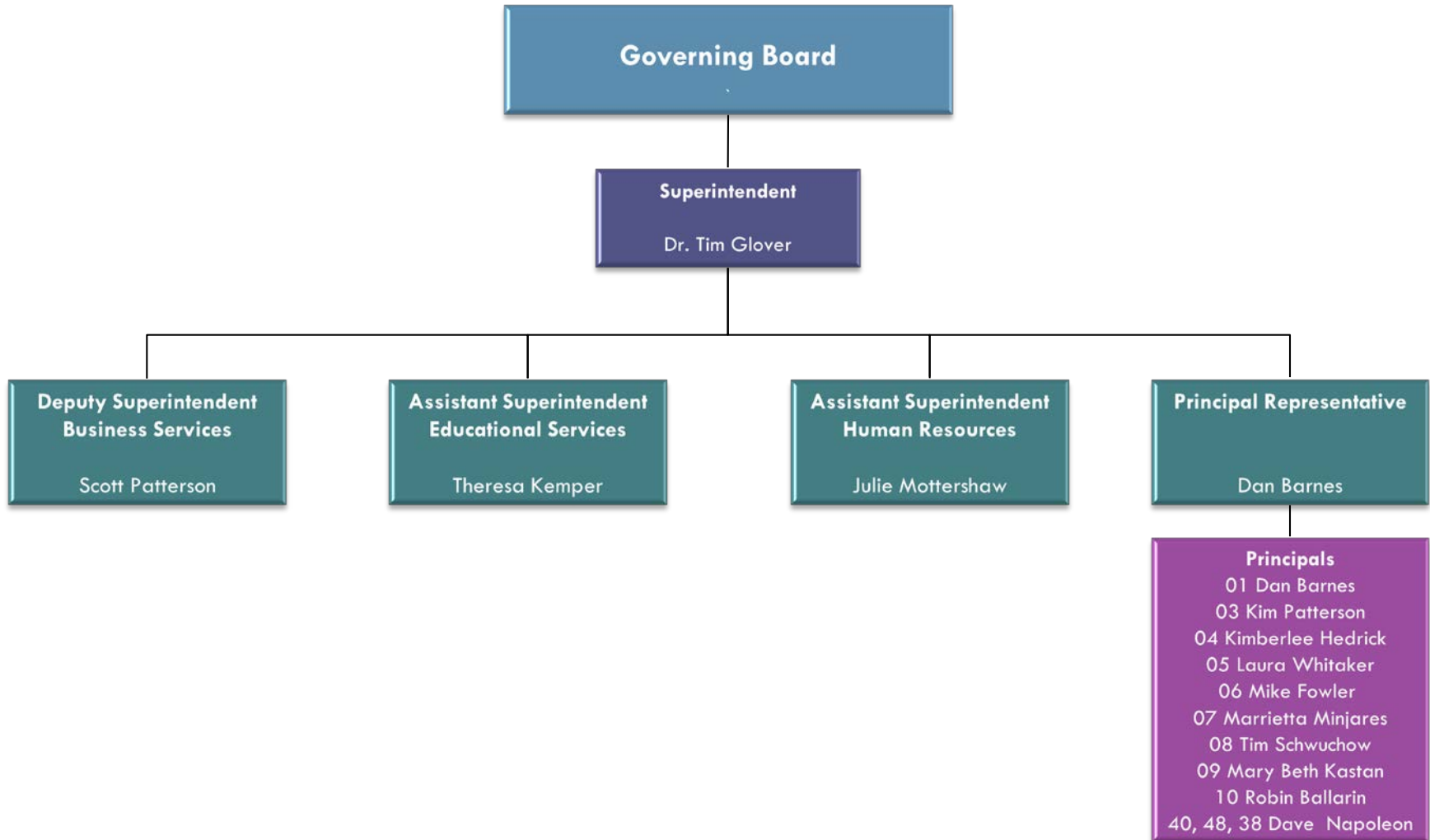


GROSSMONT UNION HIGH SCHOOL DISTRICT

Superintendent's Cabinet

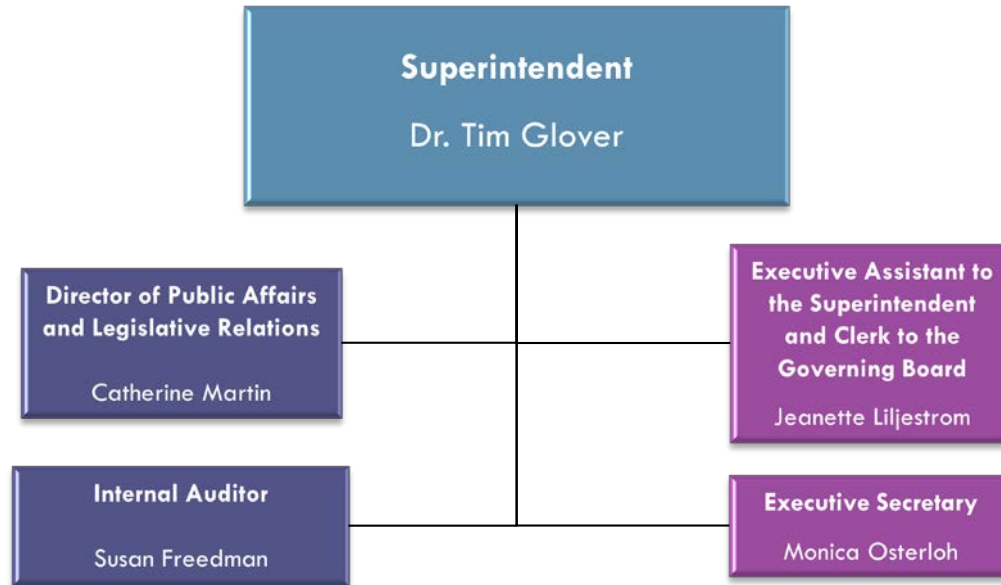
2016-17



GROSSMONT UNION HIGH SCHOOL DISTRICT

Superintendent's Office

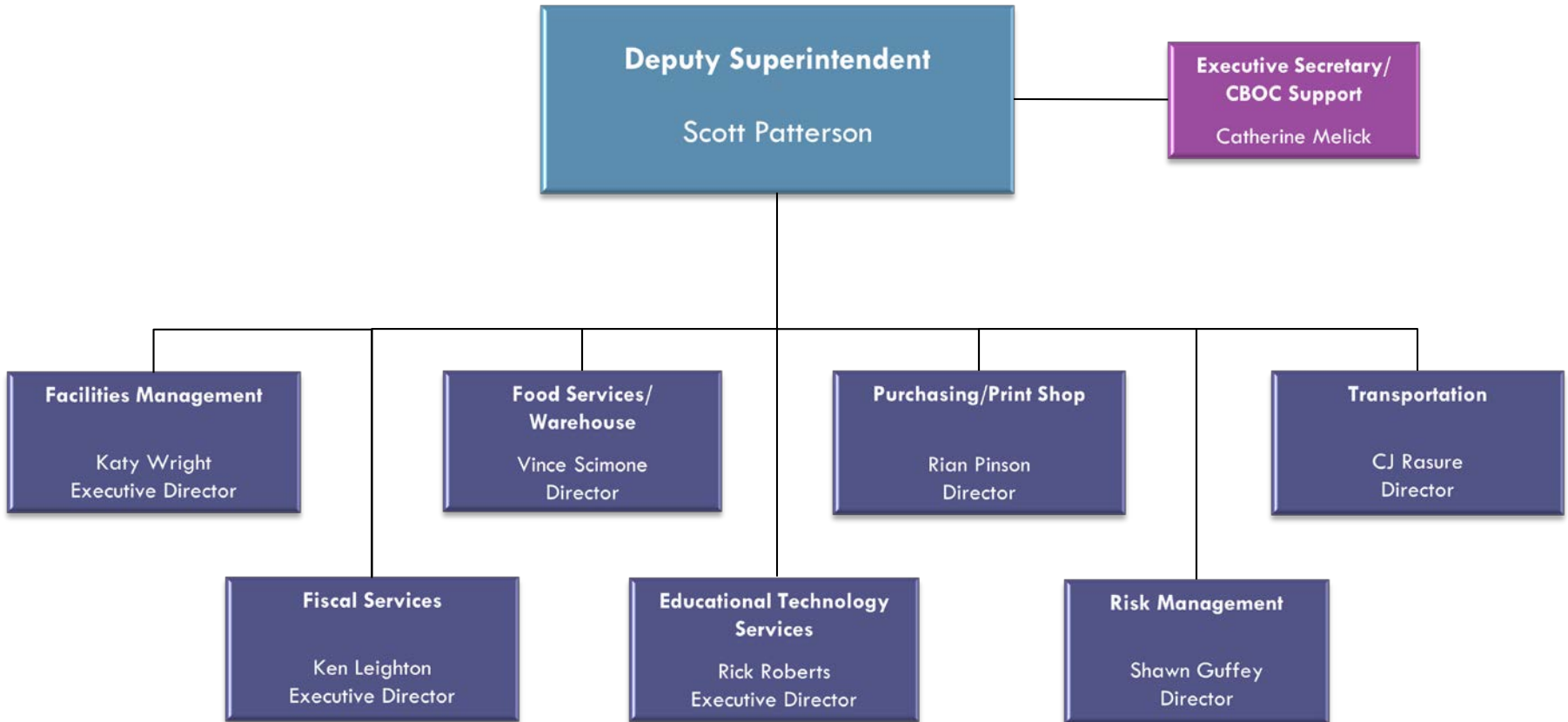
2016-17



GROSSMONT UNION HIGH SCHOOL DISTRICT

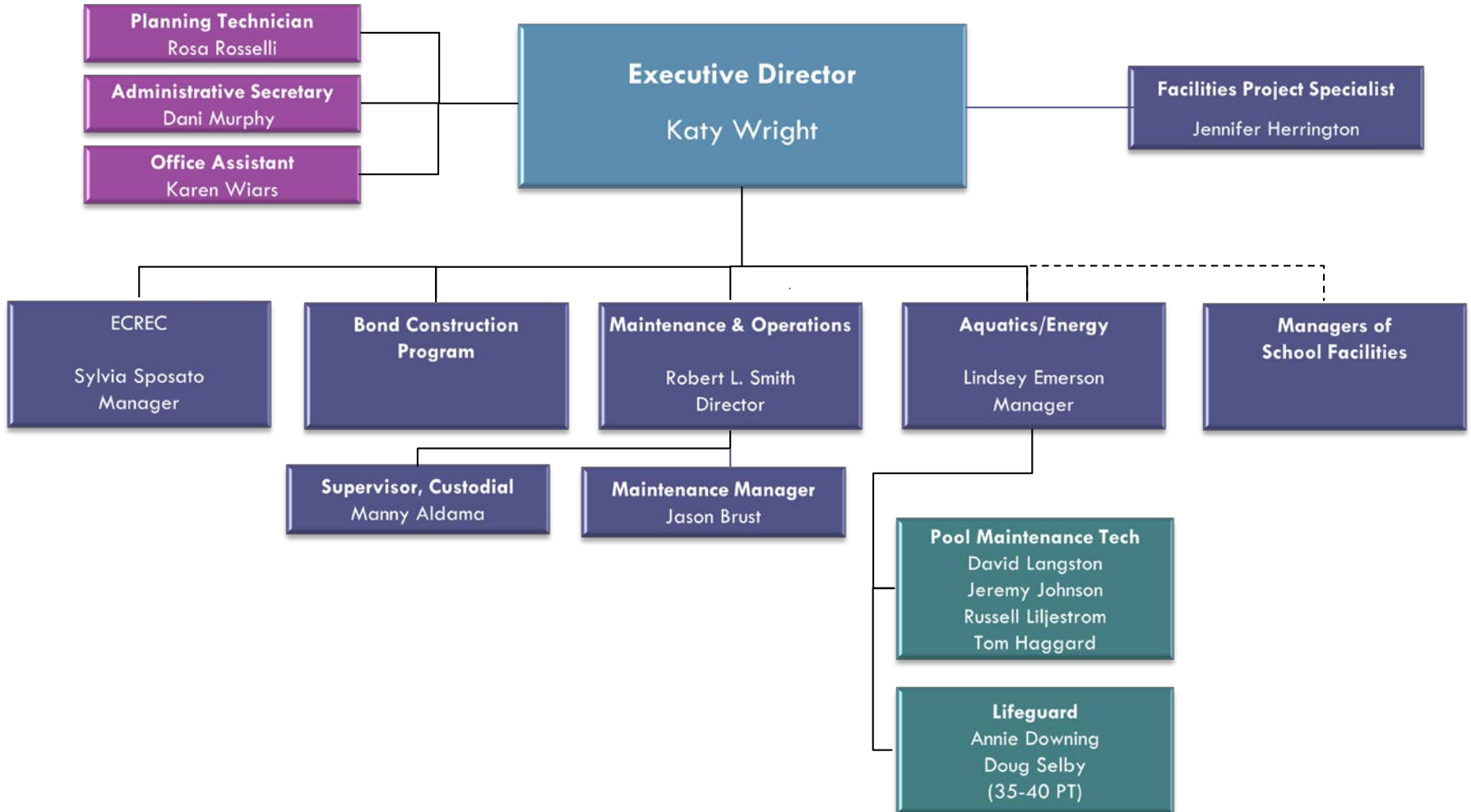
Business Services Division

2016-17



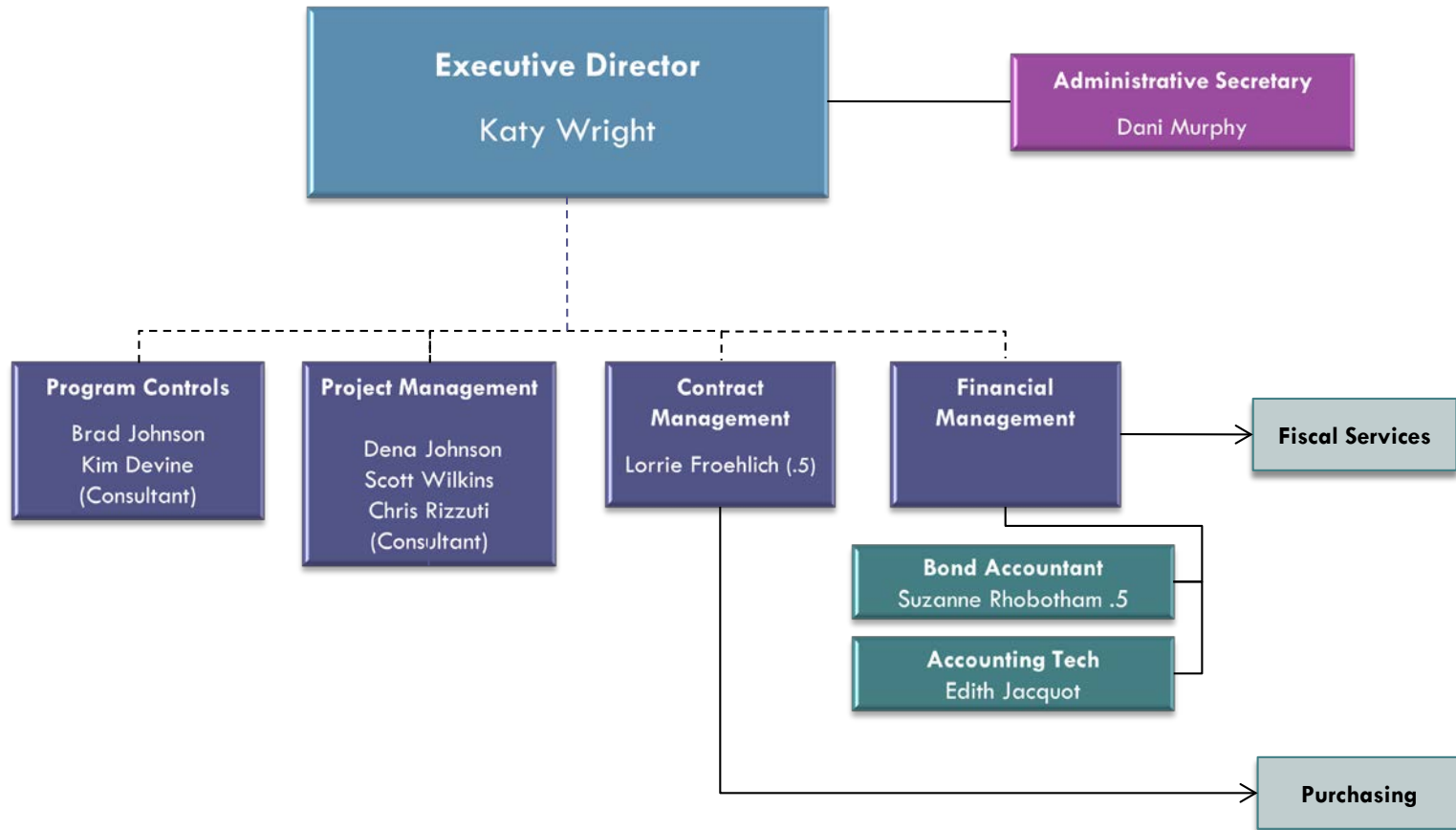
Facilities Management

2016-17



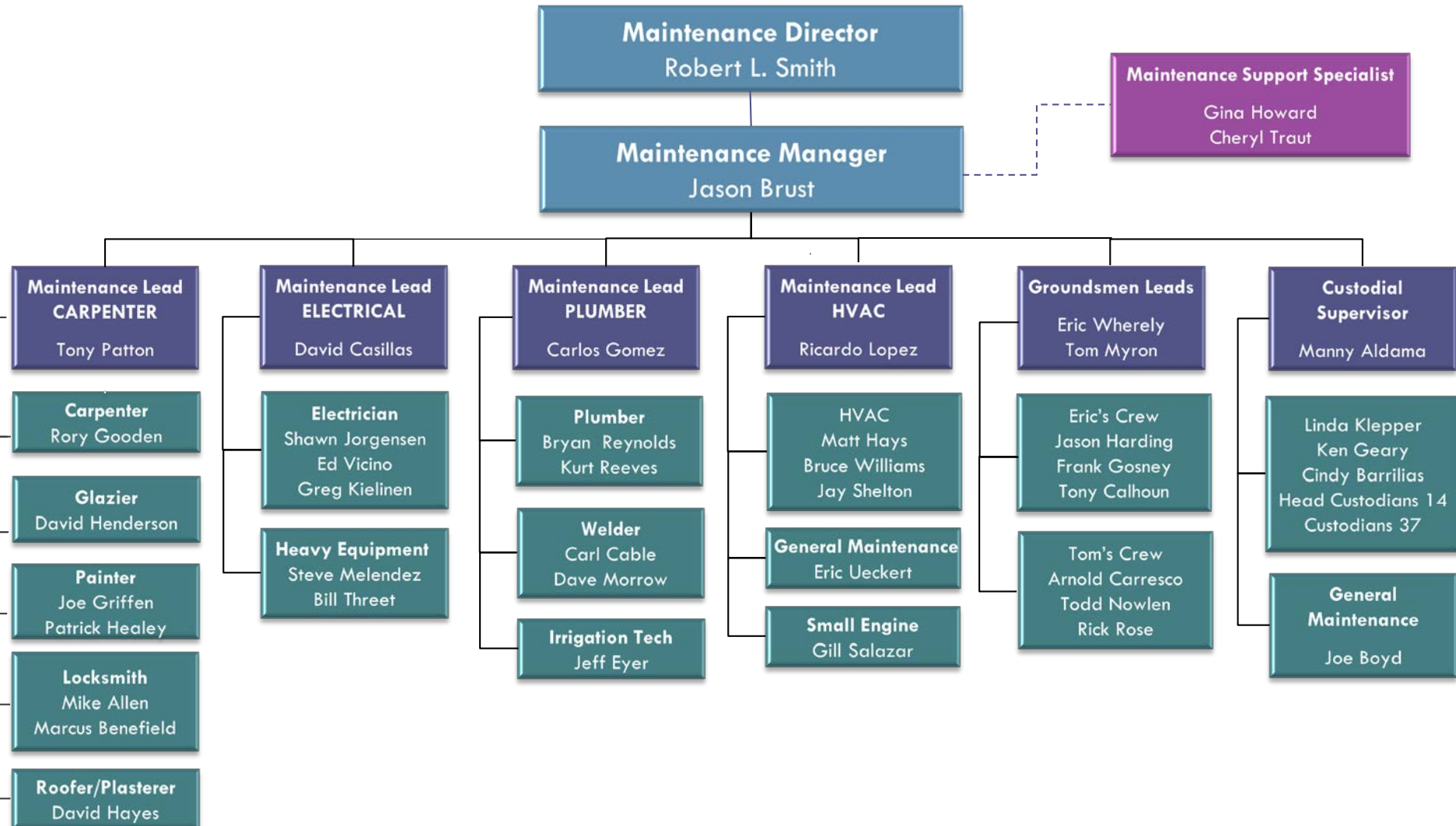
Bond Construction Program

2016-17



Maintenance

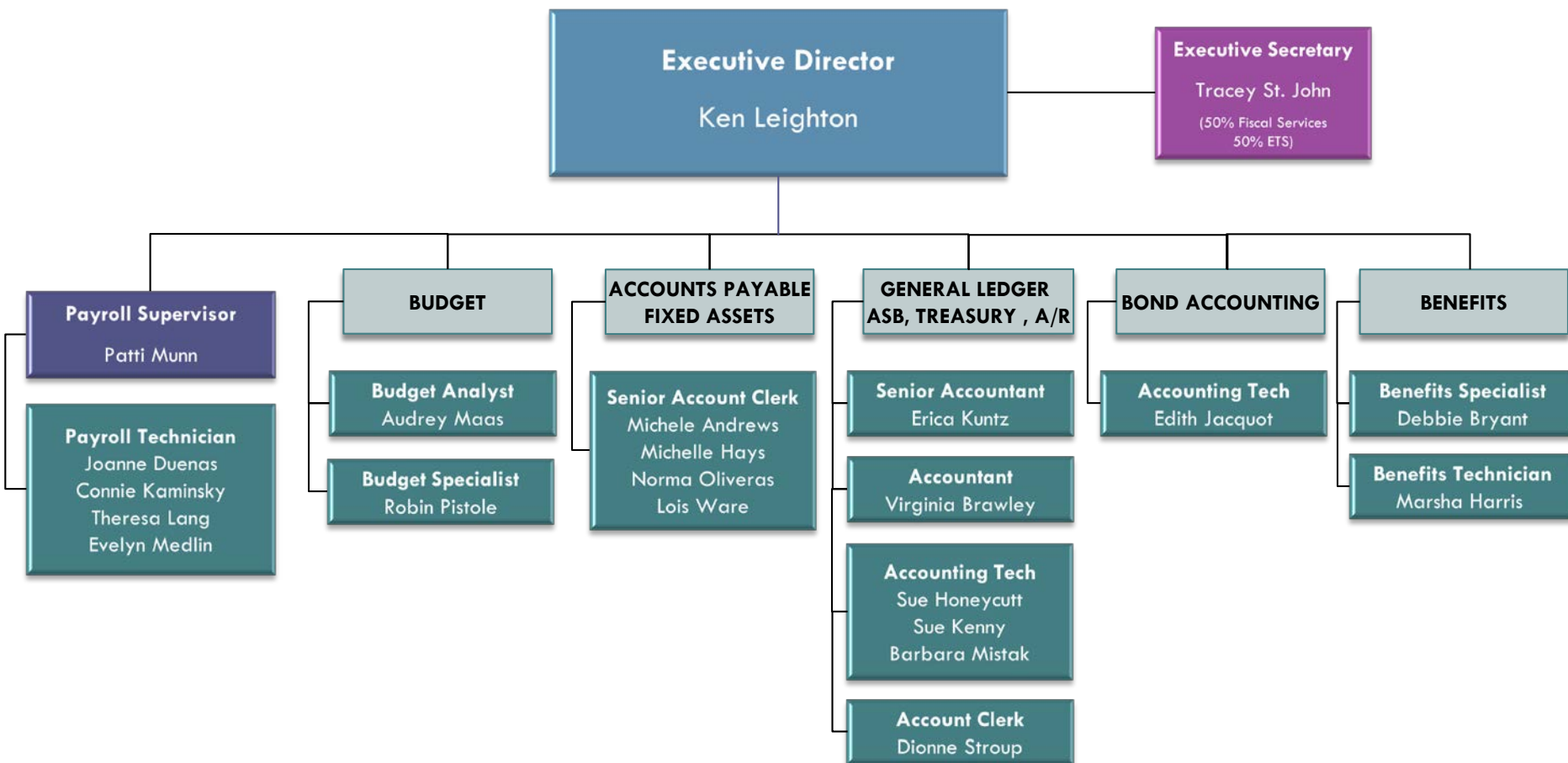
2016-17



GROSSMONT UNION HIGH SCHOOL DISTRICT
Business Services Division

Fiscal Services

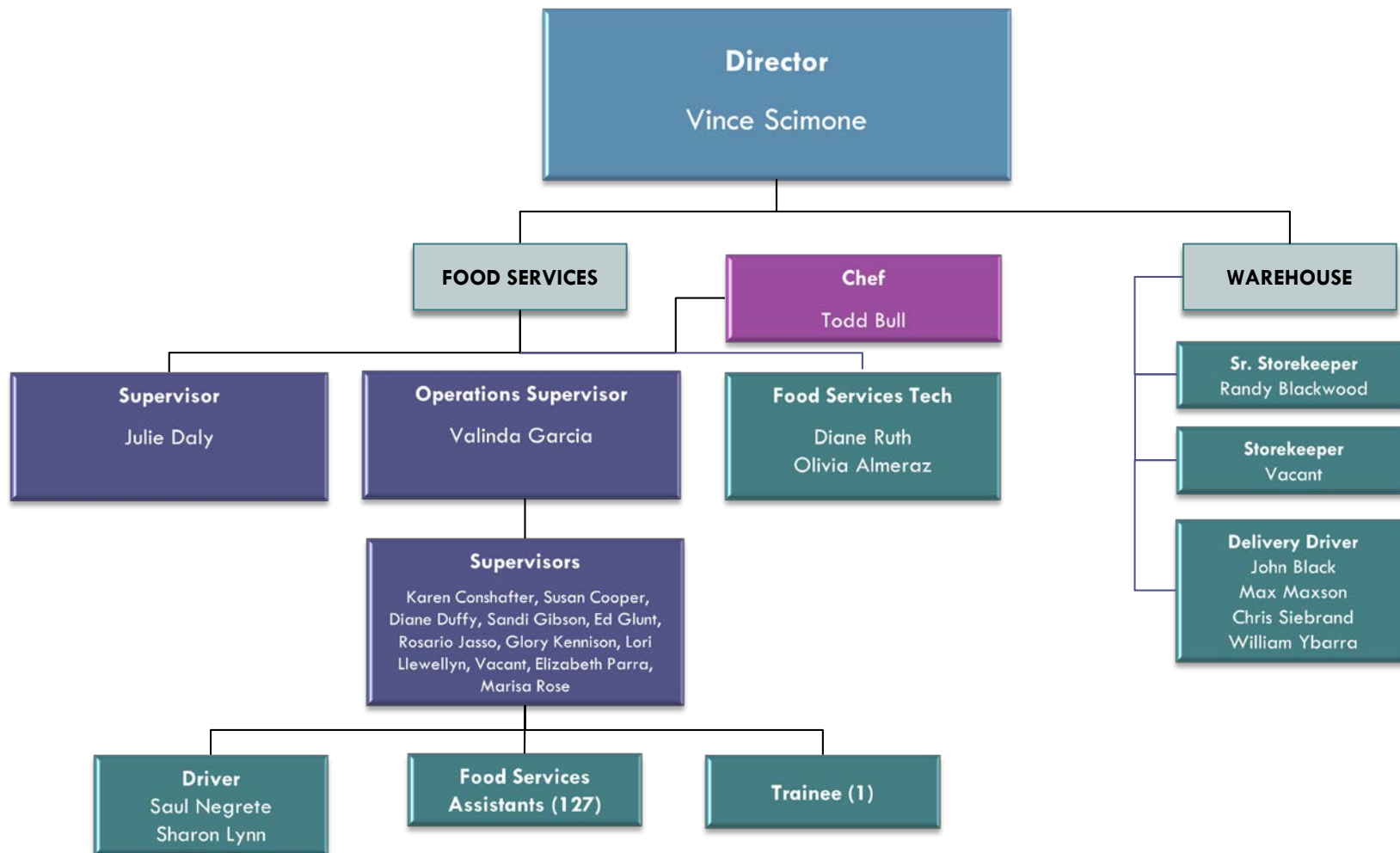
2016-17



GROSSMONT UNION HIGH SCHOOL DISTRICT
Business Services Division

Food Services/Warehouse

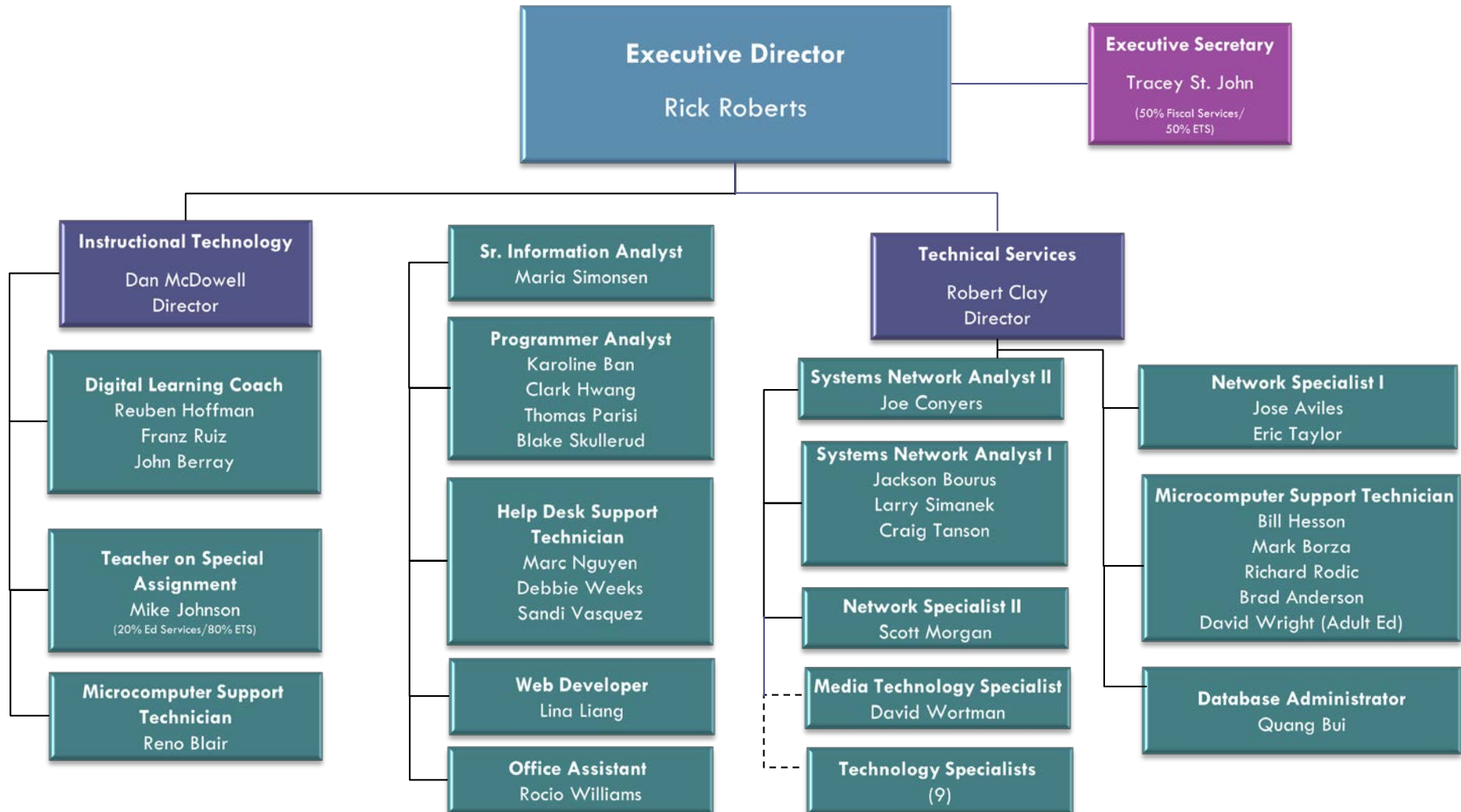
2016-17



GROSSMONT UNION HIGH SCHOOL DISTRICT
Business Services Division

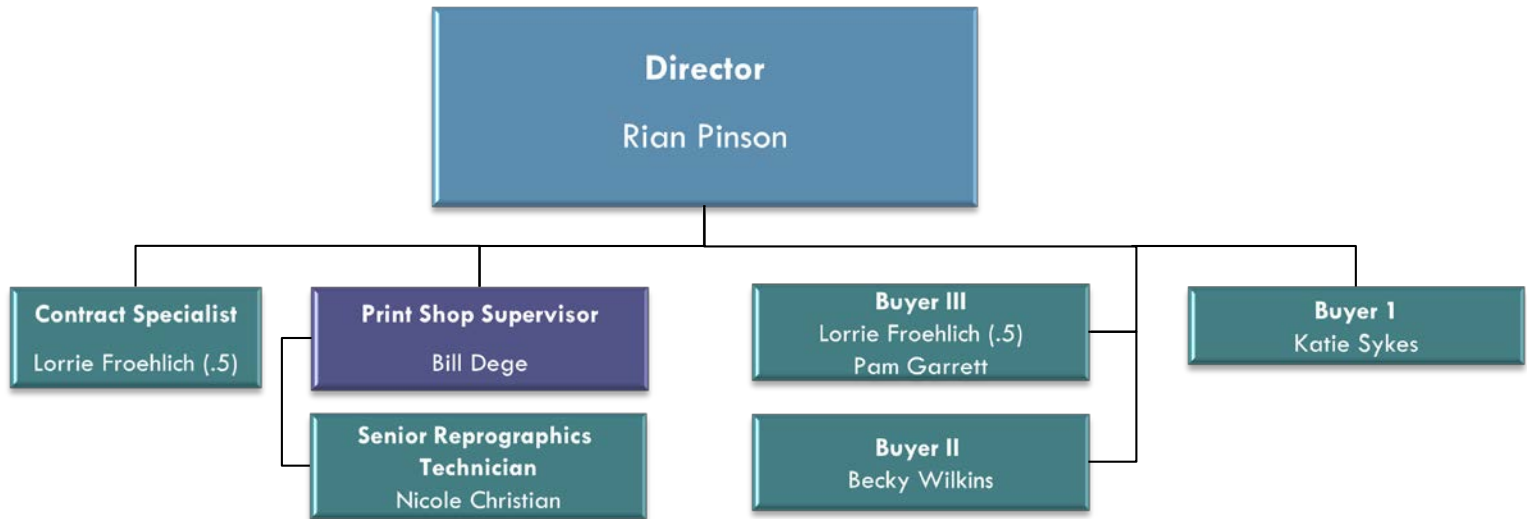
Educational Technology Services

2016-17



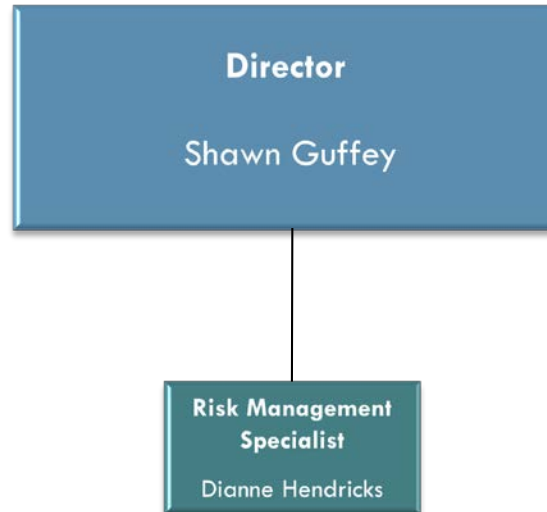
Purchasing/Print Shop

2016-17



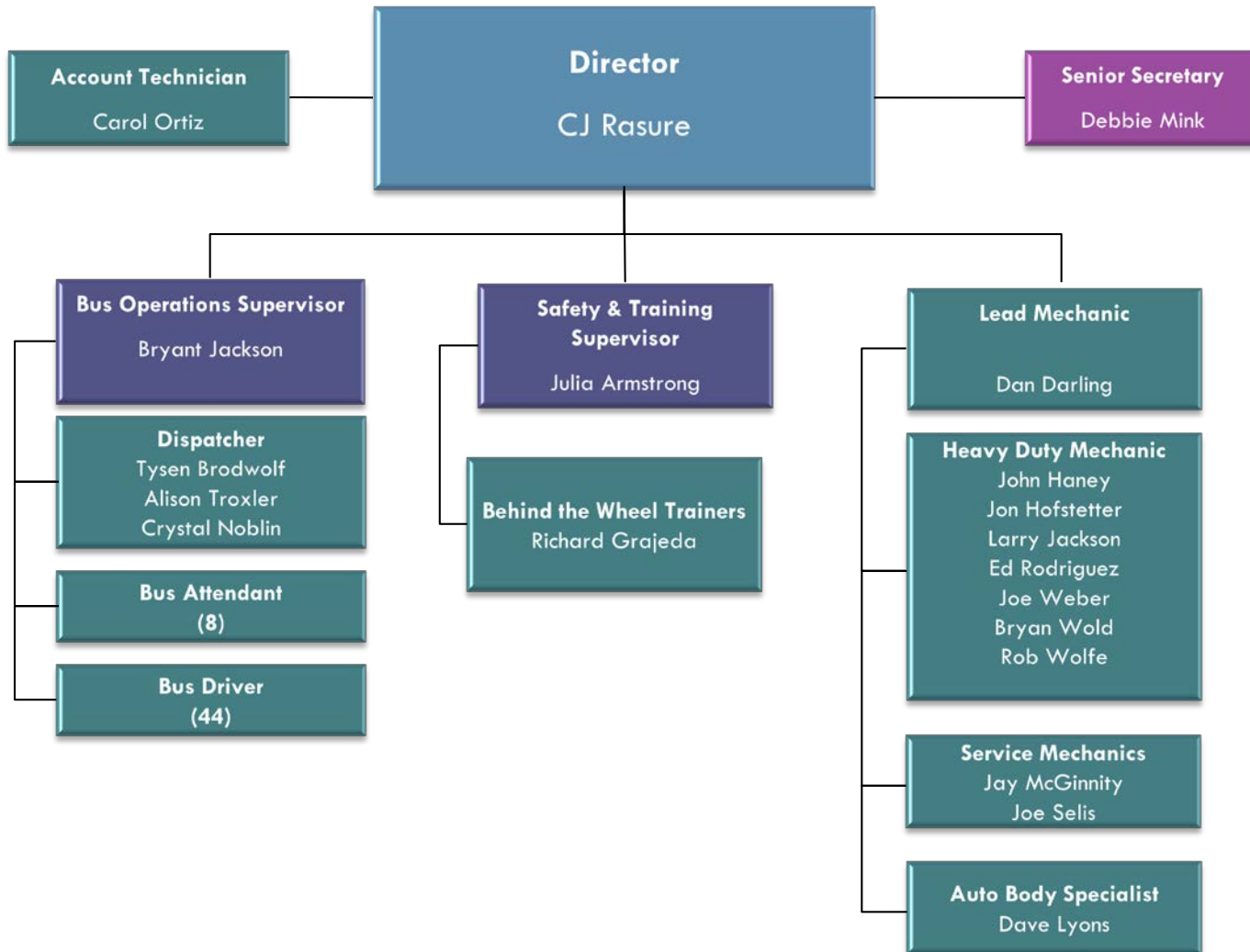
Risk Management

2016-17



Transportation

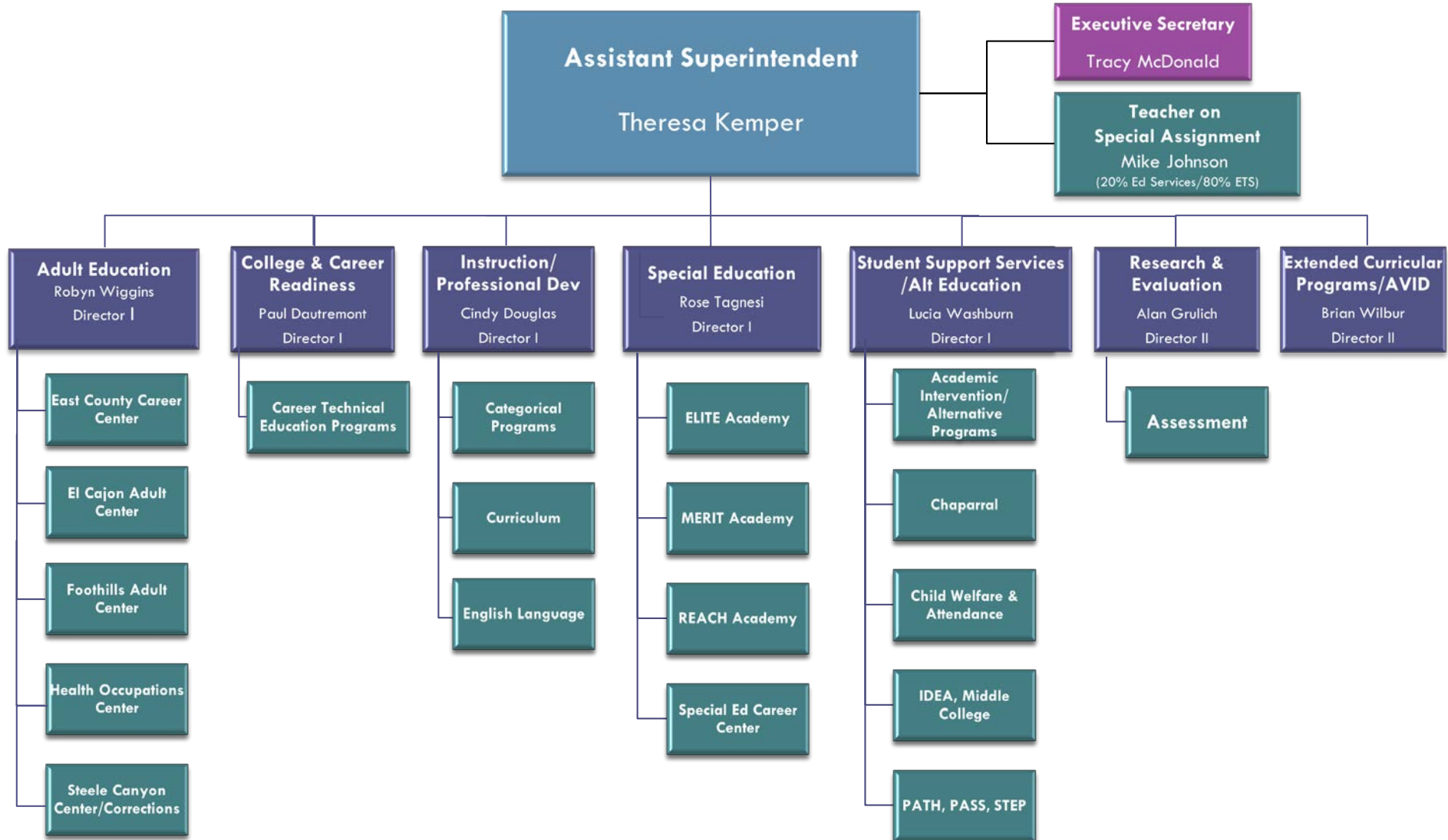
2016-17



GROSSMONT UNION HIGH SCHOOL DISTRICT

Educational Services Division

2016-17

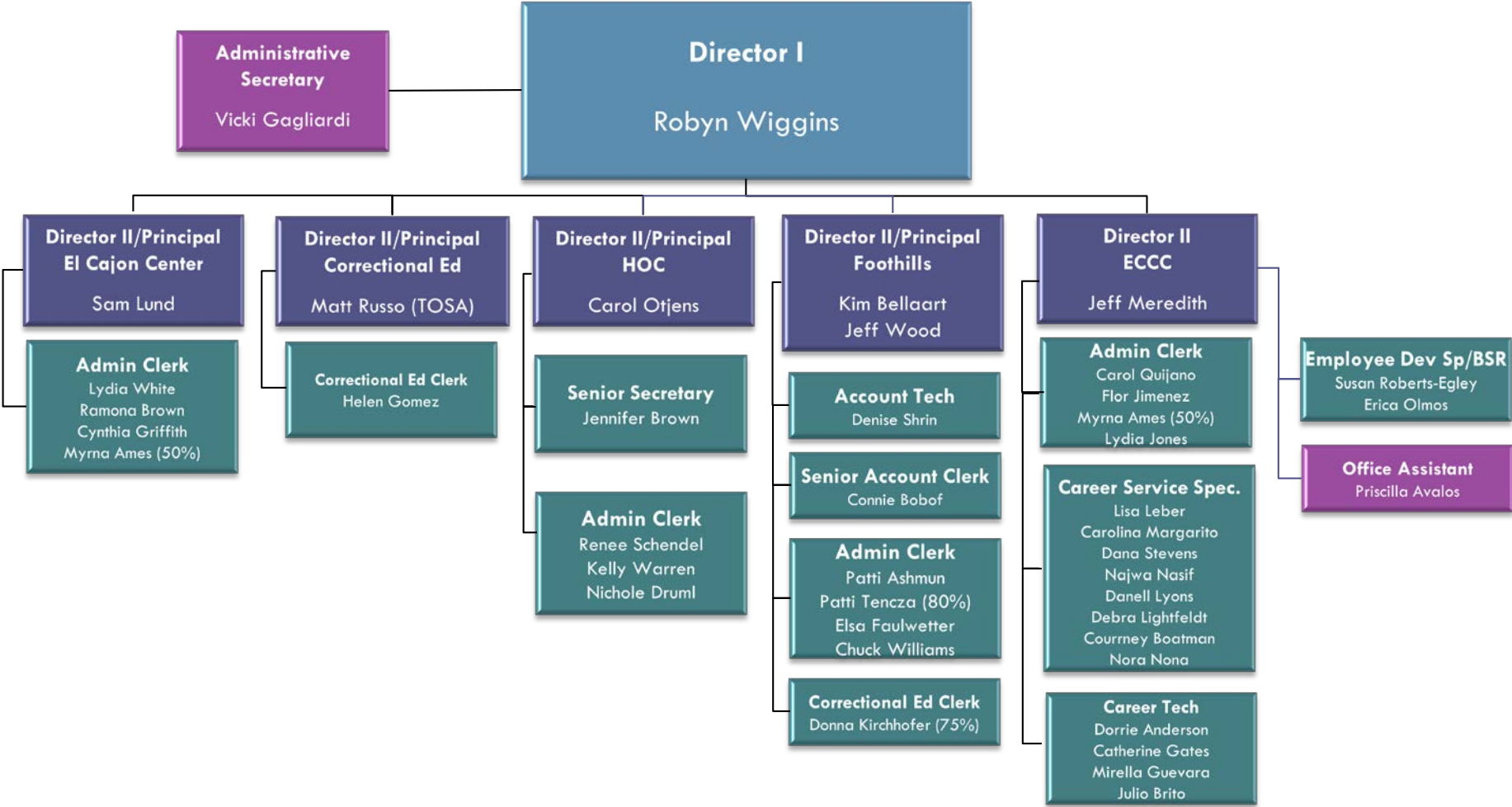


GROSSMONT UNION HIGH SCHOOL DISTRICT

Educational Services Division

Adult Education

2016-17



GROSSMONT UNION HIGH SCHOOL DISTRICT
Educational Services Division

Student Support Services/Alternative Education

2016-17

Administrative Secretary
Carrie Wilson

Secretary
Nancy Campas

Director I
Lucia Washburn

Director II
Academic Intervention
Alternative Programs
Kathy Burton

Home Choice
Certificated Staff (17)
Secretary (.75)
SST (1)
Counselor (1)

Home Hospital
Certificated Staff (6)

Learning Center
Certificated Staff (16)
Custodian (.5)

SARB
District Probation Officer
Jennifer Seltentright
Dropout Prevention Spec.
Sherman Miller
Ron Carper
Tammy Ullsperger
Manuel Hidalgo
Child Welfare & Attendance
Jeni Mendel
Office Assistant
Rocio Williams (.5)

Principal
Dave Napoleon

Administrative Secretary
Peggy Gedman

Chaparral
Certificated Staff (3)
Guidance Counselor (.5)
Special Ed Teachers (3)
Psychologist (.1)
Special Ed Aides (4)
Senior Secretary (2)
Custodians (3)
SRO (1)
Special Ed Office Assistant (.4)

Middle College
Certificated Staff (2)
Counselor (.5)
Secretary (1)

Assistant Principal
Dawn Cuizon
Shannon Foster

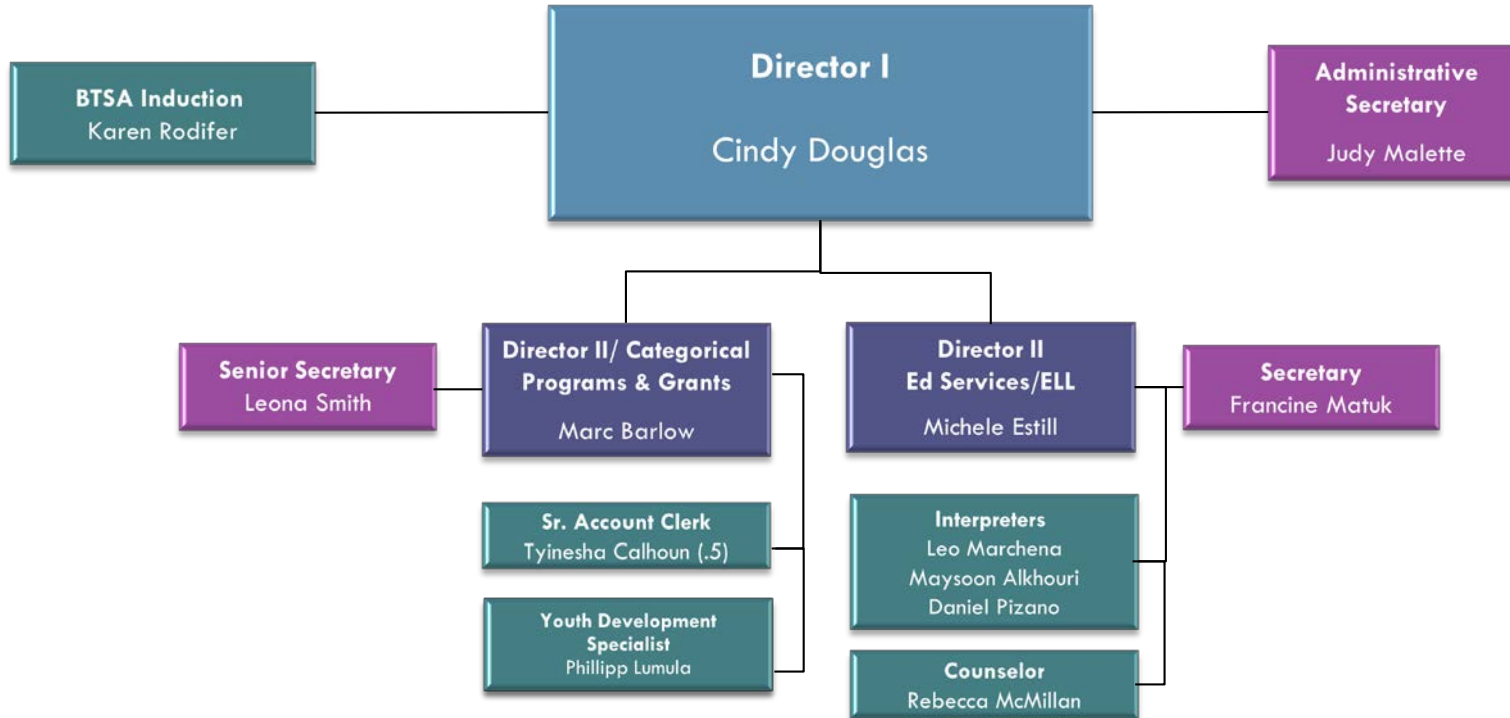
PATH

S.T.E.P.
(Systems to Encourage Peace)
Certificated, Mark Deesing

IDEA
Certificated Staff (14)
CEIS (1)
CTE Teachers (3)
Guidance Counselor (1)
Special Ed Teachers (1)
Psychologist (.1)
Special Ed Aides (1)
Senior Secretary (1)
Site Support (1)
LVN (1)
Campus Supervisor (3)
Attendance Clerk (1)
Tech Specialist (1)
GIS (1)
On-Site Sub (1)

Instruction/Professional Development

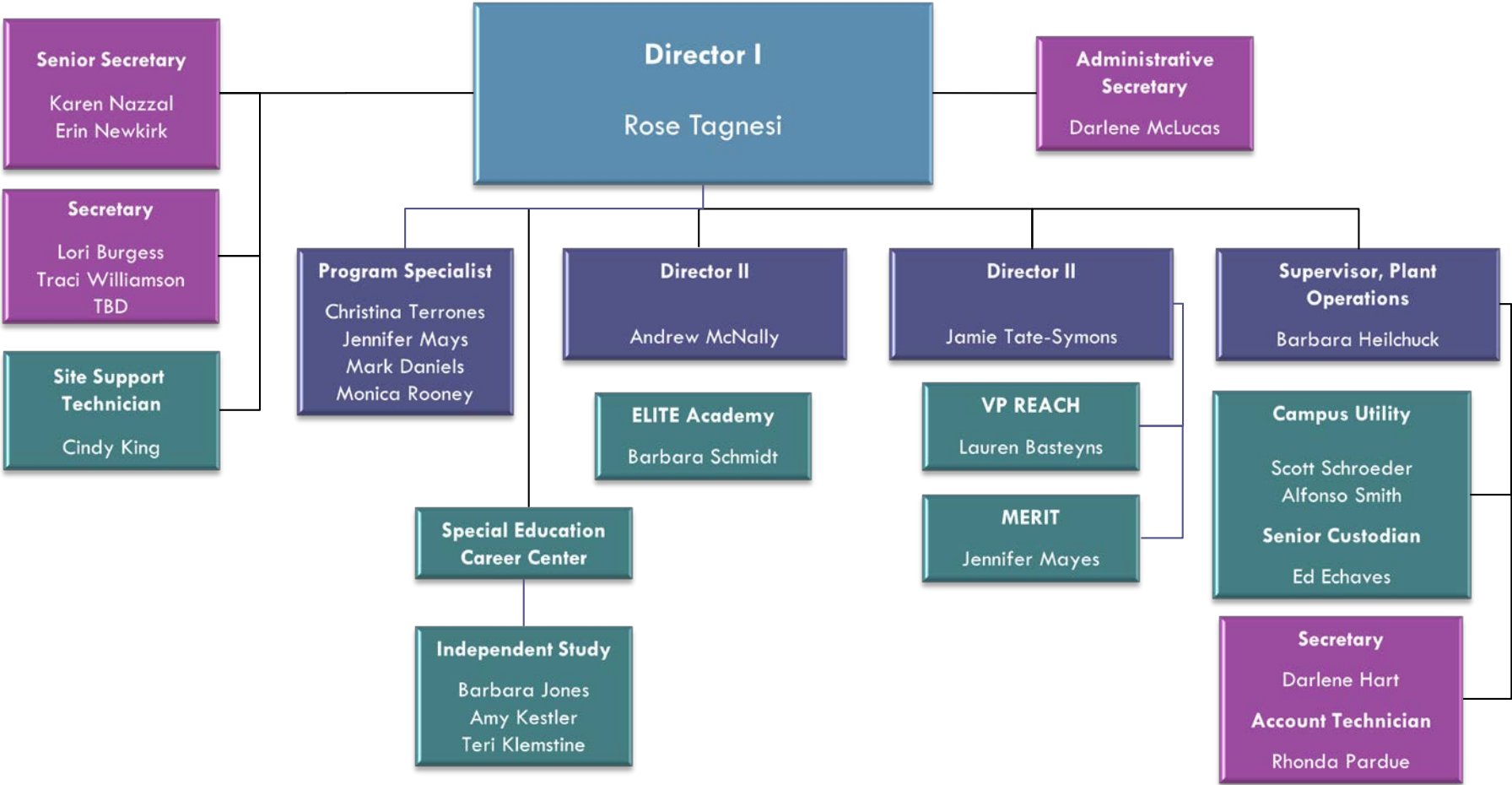
2016-17



GROSSMONT UNION HIGH SCHOOL DISTRICT
Educational Services Division

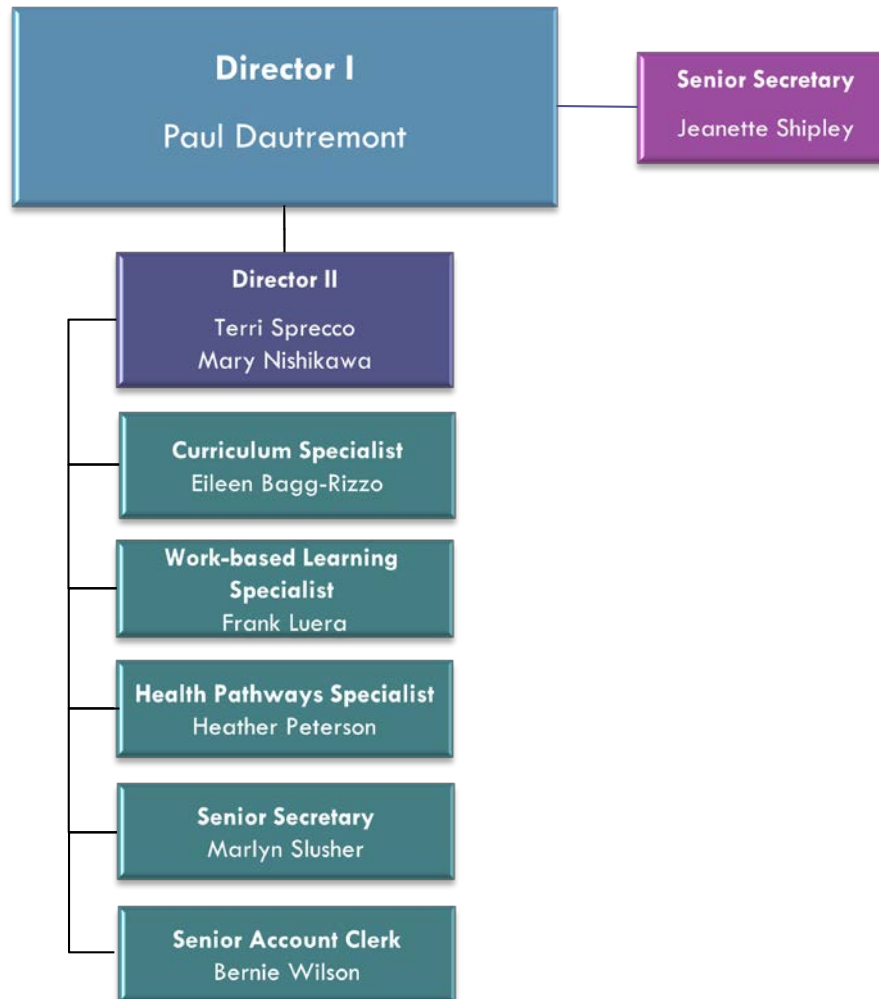
Special Education

2016-17



College and Career Readiness

2016-17



GROSSMONT UNION HIGH SCHOOL DISTRICT

Human Resources Division

2016-17

